



**Leading to Meet the Growing Public Safety Needs of our Regional Communities
Leadership - Integrity - Trust - Respect - Excellence**

Board of Commissioners
Work Session Meeting Agenda
February 13, 2024

Attendance

7:00 PM

In person at Headquarters and Zoom Virtual Meeting ID 861 5293 4763

- 1. CALL TO ORDER (7:00 p.m.)**
- 2. PLEDGE OF ALLEGIANCE (7:01 p.m.)**
- 3. APPROVAL OF AGENDA (7:02 p.m.)**
- 4. PUBLIC COMMENT Notice: All public comment are public records and may be subject to disclosure pursuant to the Public Records Act, RCW Chapter 42.56. (7:04 p.m.)**
- 5. UNION REPORT (7:13 p.m.)**
- 6. UNFINISHED BUSINESS (7:18 p.m.)**
 - a. Board Priorities Planning Discussion - Chair Micah Rowland (PAGES 3-6)
 - b. Commissioner Gear and Apparel for Discussion - Chair Micah Rowland (PAGES 7-15)
- 7. NEW BUSINESS (8:00 p.m.)**
 - a. Heavy Rescue Truck for Discussion - Deputy Chief James Curtis (PAGES 16-22)
- 8. COMMISSIONER COMMENTS (8:15 p.m.)**
- 9. EXECUTIVE SESSION (8:20 p.m.)**
 - a. Review the Performance of a Public Employee Pursuant to RCW 42.30.110(1)(g)
- 10. ADJOURNMENT (9:00 p.m.)**
- 11. AGENDA DISCLAIMER - Members of the public are advised that times**

listed on the agenda are approximate and that items on the agenda may be addressed sooner or later than the time specified.

South County Fire strives to provide accessible opportunities for all members of the public. Please notify the Board Executive Assistant at 425-551-1251 or mblankenship@southsnofire.org at least 48 hours prior to any South County Fire meeting if any accommodations are needed.

Board Meeting Agenda Bill Agenda Item 6.a.

Meeting Date: 2/13/2024

Department: City Clerk

Subject

Board Priorities Planning Discussion - Chair Micah Rowland (PAGES 3-6)

Prior Board Action:

Recommended Action: For discussion only.

Related Items: 2023 Approved Board Priorities Status Update Document 2024 Draft Board Priorities for Consideration

Staff Contact: Executive Assistant Melissa Blankenship

Approval Signature: Fire Chief Thad Hovis, Board Chair Micah Rowland

Legal Review: No Legal Review Required

Summary

At the Work Session on February 13th, we will be working on setting our 2024 Board of Commissioner priorities for the year.

Discussion

Please refer to the attached documents for the discussion at the Work Session on 2/13 and be prepared to provide input and ideas and make any suggestions for additional (new) topics to discuss. The list of 2024 priorities for consideration are being presented in collaboration with staff as they are working diligently on several priorities that they would like carried over to 2024.

Fiscal Impact

None

Recommendation

For discussion only.

ATTACHMENTS:

Description	Type
2023 Board Priorities STATUS UPDATE	Backup Material
2024 Board Priorities for Consideration	Backup Material

2023 Status of Board Priorities (alphabetical order)

Board Meeting Room Technology	In Progress. 2024 2 nd Quarter completion anticipated. Pre-bid conference was held on the 8th at 10am; bids due February 23rd.
Capitol Facilities Plan	Capital Facilities Committee created.
Cost of Service Determination	In Progress. Finance to work on post 2024 budget process.
Determine a Fast Track Program for those who wish to become DC and beyond	Not undertaken. Limited by Collective Bargaining Agreements.
Establish early conflict resolution procedures and create a safe place for grievances	Not Undertaken.
Establish EMS only at Store Front as backfill stations to meet increase demands	Not Undertaken. CFP committee
Finance Policies and Fiscal Administration/Balance Sheet Funding Levels of Reserves	In Progress. Policies/Administration Finance Committee process.
Fire Commissioner Role, Description and Responsibilities	Not Undertaken
Fireworks Ban messaging and enforcement	Completed. Additional work still needed for countywide or SWUGA sales ban.
GEMT - Ground Emergency Medical Transport	Ongoing. Status-quo 2024 budget.
Get fundings from Sound Transit for the mandated trainings and services	Completed.
Grow the RFA Bring Brier into the RFA	Completed.
Grow the RFA Bring Edmonds into the RFA	Started, Q4 2023.
Grow the RFA Bring Mountlake Terrace into the RFA	Completed.
Help to build SCF to a better Organization & Communication	Ongoing.
HQ Basement upgrade, lease	Underway. Upgrades to be completed Q1 2024.
Intergovernmental Relations - Complete bringing Brier & Mountlake into the RFA	Completed.
Intergovernmental Relations - Solid plan to bring our contract cities into RFA	Completed.
Negotiation of Next Contract	In progress. L1828-S DC CBA mediation Q1 2024.
Preparation of the arrival of Light Rail to Lynnwood 2024	Ongoing. Staff continues preparations.

RFA Insurance Self-Insurance, Excess Liability Coverage	Status-quo , VFIS coverage. Approved 2/6/24.
Strategic Planning	Not Undertaken.
Succession Plan - Early identification of leadership talents for Admin and Mgt.	Not Undertaken (by board).
Volunteer Fire Fighters Support	Completed. 24 budgeted spots filled Q4 2023. More work needed to support/define program.
Work with the County to find solutions for Emergency Room Capacity issues create the ambulances turnaround problems.	In progress. Policies developed county-wide. Currently improving.
Work with the County to find solutions for Homeless problems put pressures on the EMS demands on SCF	Ongoing. Continue to work with external stakeholders within our scope, mission, and capacity to impact societal issue.

2024 Board Priorities for Consideration

1. Capitol Facilities Plan

a. Station 22

b. Property Acquisition

2. Fire Marshal Duties

a. Partner Cities

b. Permanent RFA Responsibilities

3. Intergovernmental Relations

a. City of Edmonds

b. Other Regional Partners

4. Fireworks Ban Messaging and Enforcement

5. Revenue Funding

a. Fire Benefit Charge ballot measure efforts

6. Succession Planning Strategy

Board Meeting Agenda Bill Agenda Item 6.b.

Meeting Date: 2/13/2024

Department: Fire Chief

Subject

Commissioner Gear and Apparel for Discussion - Chair Micah Rowland (PAGES 7-15)

Prior Board Action:

Recommended Action: For discussion only.

Related Items: Draft policy

Staff Contact: Fire Chief Thad Hovis

Approval Signature: Fire Chief Thad Hovis

Legal Review: No Legal Review Required

Summary

Chair Rowland requested that the Board discuss additions to Commissioner Gear in January 2024 and that this topic be brought back for discussion in February.

Discussion

In March 2020 the Board discussed a Commissioner Gear Policy drafted by the Office of the Fire Chief that had been reviewed by Richard Davis and our previous Finance Director. The draft policy was not officially adopted by the Board at that time. As the draft policy includes jackets which were not approved to be paid for by the RFA, in March 2022, then Chair Greg Urban shared that Commissioners could pay for them out of pocket if they would like and several Commissioners did so. The draft policy was later provided to former Chair Derek Daniels on September 27, 2022, at his request which generated more discussion on this topic.

Proposal

South County Fire Commissioners shall be provided with RFA purchased equipment and RFA branded logo clothing, which may be worn to at a Commissioner's discretion, to assist in being identified as an elected official and member of the RFA at attended official internal and external meetings and RFA sanctioned events.

The following will be provided while performing the duty of South County Fire Commissioner:

- 4 South County Fire Logo shirts. (Ability to choose from a variety of vendor available styles and colors)
- 1 South County Fire Logo Multi-Season Jacket (Similar to jackets provided to Administrative Staff)
- 1 Logo Nametag (For personal identification)
- 1 Name Badge (For entry to RFA buildings as needed)
- 1 Tablet or Laptop (*Additional accessories and services will be authorized on a needed basis)
- 1 Phone (iPhone or Android)

The Tablet or Laptop, Phone and Name Badge would be funded from IT's budget. The Nametag, Shirts and Jacket would be funded from the Commissioners' Budget. Other items will be funded by the appropriate RFA Program Budget. Once a Commissioner has completed their tenure as a South County Fire Commissioner they must return these items to South County Fire. (This is to satisfy IRS requirements and avoid any SAO issues)

Fiscal Impact

TBD

Recommendation

For discussion only.

ATTACHMENTS:

Description

Draft Policy - Commissioner Apparel and Equipment

Type

Backup Material



Policy Article 100.00.014.00 – Governing Board

Policy	Article
100.00.014.00	R

Policy 100.00.014.00 – Commissioner Apparel & Equipment

To create visual consistency throughout our workforce and clearly identify South County Fire employees to the public we serve, our uniformed employees have a defined set of branded apparel and equipment that is issued upon hire. We utilize a Standard Operating Guideline (SOG 900.02.041) to set clear expectations and streamline our internal processes.

Below are sample items that can be incorporated into a Commissioner Apparel and Equipment Policy.

To be consistent with current RFA guidelines, all SCF issued gear will only be worn for authorized use and will be returned upon separation.

Shirts:

Short Sleeve Option or Equivalent:



Nike Dri-FIT Classic Polo. 267020

Nike is known for classic polos engineered to take comfort to the next level. The Dri-FIT fabric technology delivers superior moisture management, while the stitch-trimmed shoulder panels and gussets make a distinctive difference. Flat knit collar, three-button placket and open hem sleeves. Pearlized buttons are selected to complement the shirt color. The contrast Swoosh design trademark is embroidered on the left sleeve. Made of 4.7-ounce, 100% polyester Dri-FIT fabric.

Adult Sizes: XS-4XL
S, M, L, XL, 2XL, 3XL, 4XL: In Stock

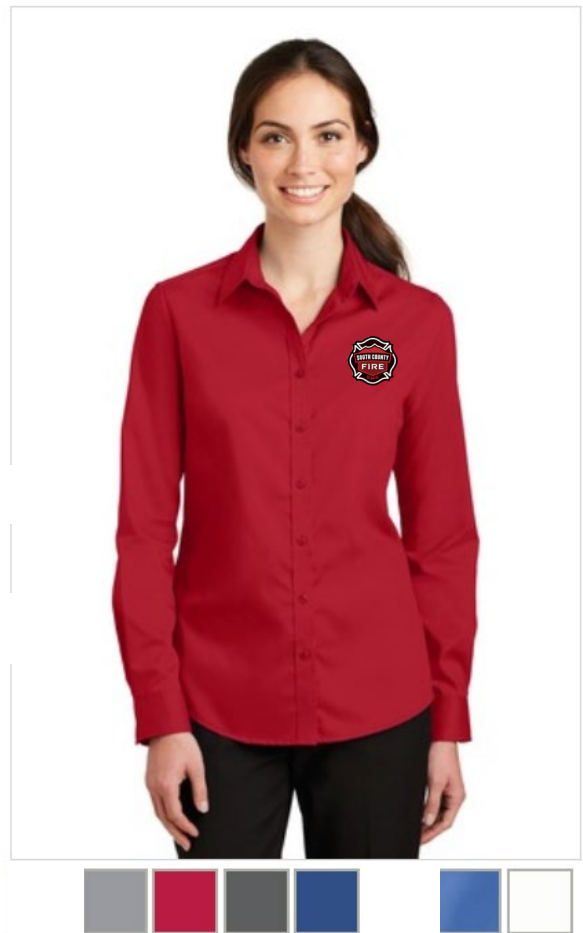


Nike Ladies Dri-FIT Classic Polo. 286772

Nike is known for classic polos engineered to take comfort to the next level. The Dri-FIT fabric technology delivers superior moisture management, while the stitch-trimmed shoulder panels and gussets make a distinctive difference. Flat knit collar. Tailored for a feminine fit with a two-button Y-placket and flat knit cuffs. Pearlized buttons are selected to complement the shirt color. The contrast Swoosh design trademark is embroidered on the left sleeve. Made of 4.7-ounce, 100% polyester Dri-FIT fabric.

Ladies Sizes: S-2XL

Long Sleeve Option or Equivalent:



CornerStone® - Long Sleeve SuperPro™ Twill Shirt. SP17

Our hardest-working shirt is simply super. Built to withstand the wear and tear of any tough job, our SuperPro Twill is also brushed for softness.

- 4.6-ounce, 65/35 poly/cotton with stain-release finish
- Rental friendly
- Button-down collar
- Dyed-to-match buttons
- Left chest pocket
- Back box pleat
- Rounded adjustable cuffs

Adult Sizes: XS-4XL

Port Authority® Ladies SuperPro™ Twill Shirt. L663

A heavy hitter in performance, our SuperPro Twill Shirt easily resists wrinkles while releasing stains. Designed for comfort, this versatile shirt functions well in almost any work environment from the office to food service.

- 3.4-ounce, 55/45 cotton/poly
- Open collar
- Bust darts
- Back shoulder pleats
- Dyed-to-match buttons
- Rounded adjustable cuffs

Ladies Sizes: XS-4XL

Jacket Option or Equivalent:



Port Authority® Core Soft Shell Jacket. J317

A reliable soft shell at a real value. This go-to basic sheds wind and rain and is a perfect choice for corporate or team uniforming.

- 100% polyester woven shell bonded to a water-resistant film insert and a 100% polyester microfleece lining
- 92/8 poly/spandex woven shell bonded to a water-resistant film insert and a 100% polyester microfleece lining (Heathers)
- 1000MM fabric waterproof rating
- 1000G/M2 fabric breathability rating
- Wind-resistant, water-repellent and rental-friendly
- Zip-through cadet collar with chin guard
- Reverse coil zippers
- Front zippered pockets
- Open cuffs and hem

Adult Sizes: XS-6XL



Port Authority® Ladies Core Soft Shell Jacket. L317

A reliable soft shell at a real value. This go-to basic sheds wind and rain and is a perfect choice for corporate or team uniforming.

- 100% polyester woven shell bonded to a water-resistant film insert and a 100% polyester microfleece lining
- 92/8 poly/spandex woven shell bonded to a water-resistant film insert and a 100% polyester microfleece lining (Heathers)
- 1000MM fabric waterproof rating
- 1000G/M2 fabric breathability rating
- Wind-resistant, water-repellent and rental-friendly
- Zip-through cadet collar with chin guard
- Reverse coil zippers
- Front zippered pockets
- Open cuffs and hem

Ladies Sizes: XS-4XL

Sweater Option or Equivalent:



Port Authority® 1/2-Zip Sweater. SW290

With rib knit details, this fine-gauge layerable sweater is just right for a day in the office or night out. Fully-fashioned sleeves add durability and ease of motion.

- 60/40 cotton/nylon
- Rib knit collar, shoulders, cuffs and hem

Adult Sizes: XS-4XL

XS, S, M, L, XL, 2XL, 3XL: In Stock

4XL: Please call for availability



Port Authority® Ladies Concept Open Cardigan. L5430

Created from super soft jersey knit, this cardigan fights indoor chill and instantly upgrades any corporate look.

- 4.4-ounce, 62/33/5 poly/rayon/spandex jersey knit
- Open front
- Shawl collar

Ladies Sizes: XS-4XL

XS, S, M, L, XL, XXL, 3XL, 4XL: In Stock

All-Weather Jacket or Equivalent:



Eddie Bauer® WeatherEdge® Plus 3-in-1 Jacket. EB556

With a fully seam-sealed shell engineered from extremely waterproof and breathable 10K/10K fabric, this versatile 3-in-1 system jacket ensures you conquer the mountain or your daily commute regardless of the weather. Exclusive WeatherEdge Plus and StormRepel® durable water-repellent technology give unparalleled protection. This 3-in-1 can be worn separately or combined for maximum comfort. Adjustable hood with locking drawcord, full-length interior storm flap and ventilating pit zips. Right chest pocket and front zippered pockets with waterproof zippers. Adjustable tab cuffs with hook and loop closures. Adjustable locking drawcord hem. Decoration access pocket in both jackets. Contrast Eddie Bauer and WeatherEdge Plus heat transfer logos on left sleeve. Shell made of 100% polyester with durable water-repellent (DWR) TPU laminate and 100% polyester lining. Inner jacket made of 100% nylon with a water-repellent finish and 100% polyester lining.

Adult Sizes: XS-4XL

XS, XL: In Stock

S, M, 3XL: Please call for availability

Additional items include:

Mobile phone (iPhone or Android)

Laptop and/or tablet (Surface and/or iPad)

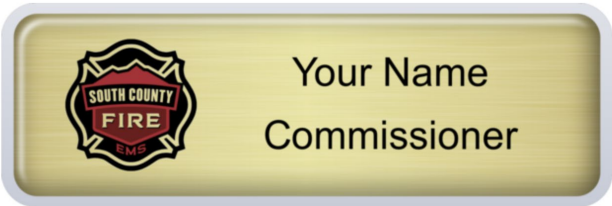
Business Cards



MICAH ROWLAND
Fire Commissioner
mrowland@southsnofire.org

SOUTH COUNTY FIRE
12425 Meridian Ave S.
Everett WA 98208
tel (425) 551-1200
fax (425) 551-1249
www.southsnofire.org

Magnetic Name Badge



Security Access Card



MICAH ROWLAND
9999

South County ID Card



MICAH ROWLAND
9999

FIRE COMMISSIONER

Board Meeting Agenda Bill

Agenda Item 7.a.

Meeting Date: 2/13/2024

Department: Purchasing-Fleet

Subject

Heavy Rescue Truck for Discussion - Deputy Chief James Curtis (PAGES 16-22)

Prior Board Action:	Acceptance of Sound Transit funding
Recommended Action:	Approve the purchase of (1) one Pierce Enforcer Heavy-Duty Rescue for \$1,445,491
Related Items:	Pierce Heavy-Duty Rescue Quote date 1/11/2024 Worksheet (1) HFE One (1) Enforcer Heavy Duty Rescue DHE365 Proposal (2) Pierce Heavy Duty Rescue Drawing (3)
Staff Contact:	Deputy Chief Curtis, Purchasing Manager Shane Jensen
Approval Signature:	Fire Chief Hovis, Assistant Chief Eastman, Chief Financial Officer Chris Bothwell
Legal Review:	Legal Review Completed

Summary

This item seeks Board approval to purchase a Heavy-Duty Rescue Truck (hereinafter referred to as a Heavy Rescue). The purchase is included in the apparatus replacement schedule for 2025. Payments for the purchase are, however, not expected to be made until the 2027 budget cycle. Per SCF policy, Board approval is required for this item due to the value of the contract.

Discussion

The RFA schedules the replacement of all assets currently in service on the asset replacement schedules, the replacements are then funded in the annual budget process. The apparatus replacement schedule includes the purchase of a Heavy Rescue in 2025. The current order lead time for a Pierce Heavy Rescue is 43-48 months.

Equipment and Goods over \$75,000 are subject to formal sealed bidding, require a PO or contract, and require Governing Board approval. Per RCW 39.34 in lieu of a formal sealed bid process the RFA may enter into an Interlocal Cooperative Purchasing Agreement and "piggyback" onto a previously bid contract. Per Section 9.2 of the Purchasing Policy, H-GAC is an identified Cooperative Purchasing Group available to SCF. As with previous Pierce purchases, due to the lack of responses anticipated in sealed bidding a brand designated item with only a single available vendor, H-GAC was identified as the method of procurement most likely to return the best value to the RFA.

The vendor has offered three payment discounts: a 100% prepayment discount, a payment upon completion discount, and a chassis progress payment. We have exercised a varying combination of these discounts with past apparatus purchases. Historically discounts have varied with the completion level of the

truck and cost of capital to Pierce.

Due to the protracted timeline for delivery of this apparatus and the current interest rate environment, staff is recommending funding this purchase with progress payments during stages of development, the first payment will not be due until the apparatus has a scheduled production spot, which is over three years away. Staff estimates that the 100% prepayment discount does not offer a significant benefit, compared to the potential investment earnings over the period spent waiting for a production spot.

Fiscal Impact

The SCF Rescue apparatus has a scheduled replacement value of \$1M based on our current Medium-Duty apparatus. This dollar amount is represented in the most recent iteration of the replacement schedule in 2025. Due to the increased complexity of light rail, elevated track, and vertical growth within the RFA, the replacement apparatus design now requires a Heavy-Duty chassis and is much larger to accommodate the additional equipment and added responsibilities. Even with Sound Transit contributing \$250,000, the total replacement cost for a much larger and capable apparatus exceeds the planned cost by approximately \$200,000. Staff recommends a current year transfer from the General Fund of approximately \$200,000 to fund the shortfall and maintain the financial health of the Capital Fund-Apparatus Reserve.

Staff is working on a plan to bring a budget amendment to the Board to fund the known underfunded apparatus replacements once the books are closed on 2023 and the ending fund balance is known. Staff intends to include this item in the list of underfunded future replacements that also includes: a tractor drawn ariel (TDA) that is scheduled for delivery in Spring of 2026 and an engine that is scheduled for delivery in early 2025.

Recommendation

This item is for Board/Staff discussion at this Work Session.

Staff plans to bring this item to the 2/20/2024 Regular meeting with a recommendation the Board of Commissioners approval of the purchase of a Heavy Rescue through the H-GAC bid/award process, Hughes #DHE365 with election of the Chassis Progress, and Factory Completion discounts, for \$1,445,491.

ATTACHMENTS:

Description	Type
Rescue Truck Quote	Backup Material
Heavy Rescue Truck Drawing	Backup Material
Heavy Rescue Truck Quote Detail	Backup Material



January 11, 2024

South County Fire, WA
One (1) Enforcer Heavy Duty Rescue DHE365
Build Location: Appleton, WI

Proposal Price	\$1,335,641.00	
Washington State sales tax @ 10.50%		140,242.31
Washington State motor vehicle tax @ 0.30%		4,006.92
Total Bid Price Including Sales Tax		\$1,479,890.23
Less chassis progress payment discount	(17,779.00)	
Less payment upon completion @ factory discount	(13,267.00)	
Less 100% pre-payment discount	(127,433.00)	
Subtotal including all pre-pay discounts	\$1,177,162.00	
Washington State sales tax @ 10.50%		123,602.01
Washington State motor vehicle tax @ 0.30%		3,531.49
Total Bid Price Including Pre-Pay Discounts & Sales Tax		\$1,304,295.50

Terms:

Price Expiration: The above pricing is valid until April 26, 2024.

Future Changes: Various state or federal regulatory agencies (e.g. NFPA, DOT, EPA) may require changes to the Specifications and in any such event any resulting cost increases incurred to comply will be added to the Purchase Price to be paid by the Customer and documented on a Change Order.

Component Price Volatility: Company shall not be responsible for any unforeseen price increase enacted by the suppliers of major components of the Product (including but not limited to engine, transmission, and fire pump) after the execution of contract or purchase order. Any price increase major components of the product will be passed through to the Customer and will be documented on a Change Order.

Delivery: Based on Pierce's current delivery schedule the apparatus would be ready for delivery from factory within 43 to 48 months after contract execution or purchase order. Delivery is subject to change pending Pierce's delivery schedule at time of order. This time does not include any possible delays that may be caused by national disasters or pandemic.

Payment Terms:

a. If pre-payment discount options are elected, the following terms will apply:

i. Chassis Progress Payment Discount: The chassis progress payment in the amount of **\$592,618.00** will be due **three (3)** months prior to the ready for pick up from the factory date. If elected, an invoice will be provided 30 days prior to the chassis payment due date. If payment is not made when due the discount total will be added back to the final invoice.

ii. Payment Upon Completion at Factory Discount: If elected final payment is due prior to apparatus leaving the factory for delivery. If payment is not processed upon receipt of invoice the discount total will be required in addition to the invoice amount.

iii. 100% Pre-Payment Discount: If elected, an invoice will be provided upon order processing for the 100% pre-payment. Upon receipt of invoice, payment must be made within thirty (30) days. If this option is elected, the discount is in addition to the chassis progress payment discount, and the payment upon completion at the factory discount. If payment is not made when due, the above mentioned pre-payment discounts or a portion thereof, will be added back to the final invoice. Final payment, including any changes made during manufacturing, is due upon completion of the Product at the factory and prior to delivery from the factory.

b. If pre-payment discount options are not elected standard payment terms will apply: Final payment will be due 30 days after the apparatus leaves the factory for delivery. If payment is not made at that time a late fee will be applicable.

c. Payments made for apparatus using a credit card will be applicable to a credit card convenience fee.

Consortium Purchase: The proposal is based on the unit being purchased through H-GACBuy (Houston-Galveston-Area-Council Cooperative Purchasing Program) utilizing contract FS12-23 valid until 11/30/2027 with a registered End User member Interlocal Contract. It is the purchaser's responsibility to determine if the use of consortiums meets their purchasing requirements.

Performance Bond: A performance bond is included in the above price and will be provided after order placement. If customer elects to remove the performance bond **\$4,094.00** may be deducted from the purchase price. All purchase orders must include the following verbiage if a performance bond is elected, **"Due to global supply chain constraints, any delivery date contained herein is a good faith estimate as of the date of this order/contract, and merely an approximation based on current information. Delivery updates will be made available, and a final firm delivery date will be provided as soon as possible."**

Transportation: Transportation of the apparatus to be driven from the factory to the customers location is included in the above pricing. However, if permits are not obtainable, due to the weight of the apparatus, and the apparatus must be transported on a flat bed, additional Transportation charges will be the responsibility of the customer. We will provide pricing at that time if necessary. If customer elects to drive the apparatus from the factory, **\$5,500.00** may be deducted from the purchase price. If this option is elected payment in full and proof of insurance must be provided prior to leaving the factory and the customer is responsible for compliance with all state, local and federal DOT requirements including the driver possessing a valid CDL license.

Inspection Trips: Three (3) factory inspection trips for **four (4)** customer representatives is included in the above pricing. The inspection trips will be scheduled at times mutually agreed upon between the manufacture's representative and the customer, during the window provided by the manufacturer. Airfare, lodging and meals while at the factory are included. In the event the customer is unable to travel to the factory or the factory is unable to accept customers due to the restrictions caused by a national disaster or pandemic then the Dealership reserves the right to use forms of electronic media to accomplish the intention of the inspection trips. Every effort will be made to make the digital media as thorough as possible to satisfy the expectations of the of the customer. If the customer elects to forgo an inspection trip **\$2,400.00** per traveler (per trip) will be deducted from the final invoice.

Acceptance of Proposal:

- a. If the customer wishes to purchase the proposed apparatus Hughes Fire Equipment will provide the Customer its form of Purchase Agreement for the Customer's review and signature.
 - b. If the Customer desires to use its standard form of purchase order as the Purchase Agreement, the purchase order is subject to review for any required revisions prior to acceptance.
 - i. Purchase orders must be addressed to Hughes Fire Equipment, Inc., 910 Shelley Street, Springfield, Oregon 97477.
 - ii. Purchase order must reference **"One (1) Enforcer Heavy Duty Rescue DHE365 dated 01/11/2024."**
 - iii. Purchase order must include the following verbiage if a performance bond is elected, **"Due to global supply chain constraints, any delivery date contained herein is a good faith estimate as of the date of this order/contract, and merely an approximation based on current information. Delivery updates will be made available, and a final firm delivery date will be provided as soon as possible."**
 - iv. Purchased order should reference, **"Purchased utilizing HGACBuy Contract FS12-23."**
 - v. Purchase orders must be signed and dated by authorized personnel.
-

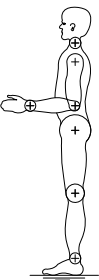
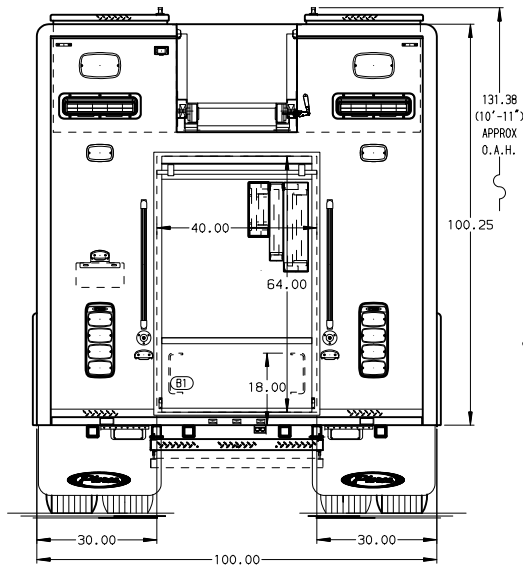
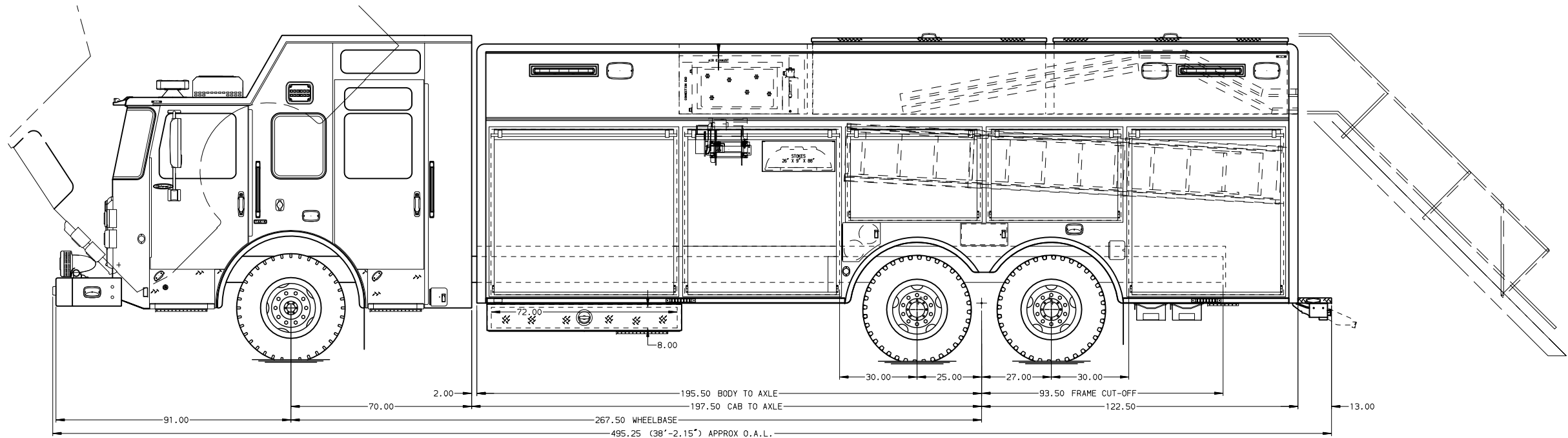
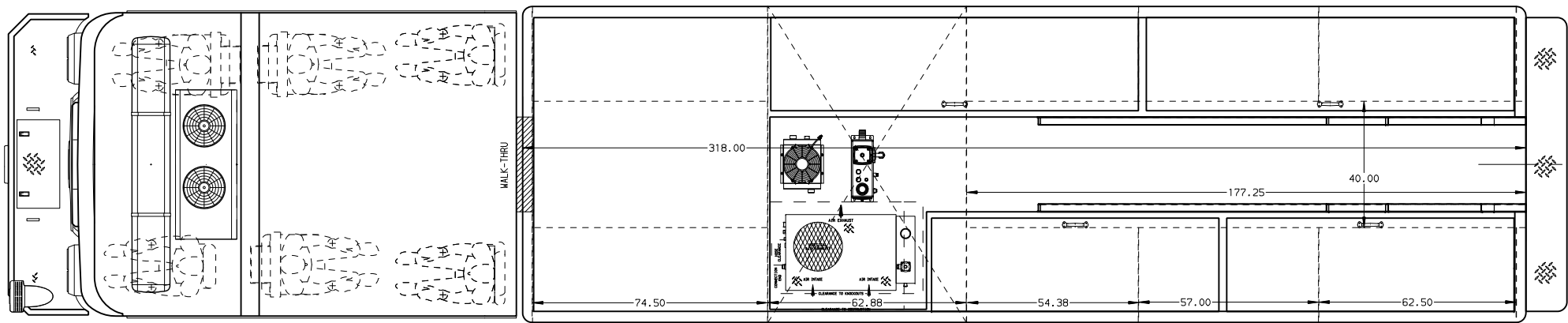
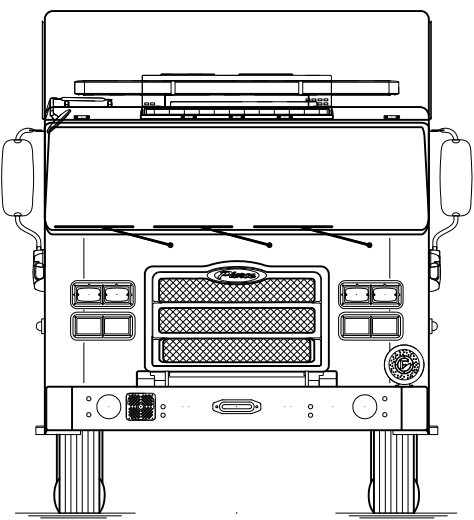
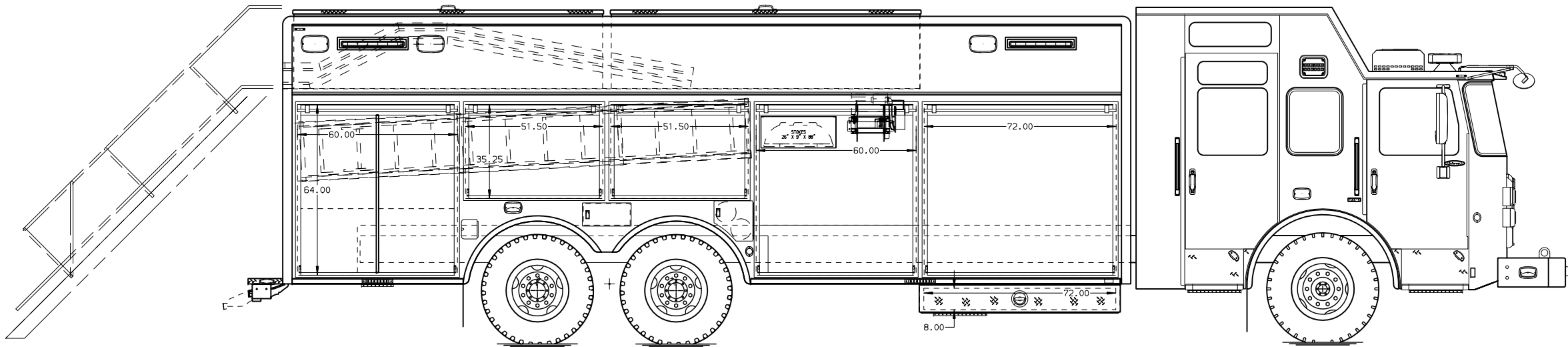
By signing below you agree to purchase the above apparatus.

Customer Signature: _____

Date: _____

PO # (if applicable): _____

Proudly serving you, while you serve your communities since 1987



SIDE ROLL AND FRONTAL IMPACT PROTECTION

MAXIMUM O.A.L.: 40' - 0"

NOTE:
DIMENSIONS SHOWN ARE APPROXIMATE
AND ARE SUBJECT TO MINOR DEVIATIONS
AS MAY OCCUR OR BE NECESSARY IN
CONSTRUCTION.
MINOR DETAILS NOT SHOWN.

NOTE:
1:

CUSTOMER APPROVAL					 MANUFACTURING INC.			JOB NO.	PRELIM		
APPROVED BY: _____								SCALE	DATE		
DATE: _____					 MANUFACTURING INC.			1:24			
				CHASSIS DATA				TITLE	HEAVY DUTY RESCUE WALKIN / NON WALK-IN	DRAWN BY	09JAN24
				MAKE				FOR	SOUTH SNOHOMISH COUNTY FIRE & RESCUE	CHECKED BY	-
				PIERCE					BID #365		
				MODEL				DWG NO.	DARBY HEPPER	SHEET SIZE	SHEET NO.
	-	-	-	EN7024	71424-SH1			D	1 OF 1		
REV	DATE	BY	CH								

CLEAR DOOR WIDTH KEY			
ANDOR ROLL UP DOORS:	-2 1/4"		
GORTITE ROLL UP DOORS:	-2 1/2"		
PIERCE DOUBLE LAP DOORS:	-4 1/4"		
PIERCE LEFT-LAP DOORS:	-1 1/2"		
(EX: 60" F-F - 2 1/4" = 57 3/4" CLEAR)			
(F-F) = FRAME TO FRAME			

REV	DATE	BY	CH
-	-	-	-
EN7024			

CHASSIS DATA	MAKE	MODEL
PIERCE		
EN7024		

TITLE	FOR	DWG NO.
HEAVY DUTY RESCUE WALKIN / NON WALK-IN	SOUTH SNOHOMISH COUNTY FIRE & RESCUE BID #365	71424-SH1

DATE	BY	CH
-	-	-
EN7024		

DATE	BY	CH
-	-	-
EN7024		

DATE	BY	CH
-	-	-
EN7024		

DATE	BY	CH
-	-	-
EN7024		

DATE	BY	CH
-	-	-
EN7024		

DATE	BY	CH
-	-	-
EN7024		

DATE	BY	CH
-	-	-
EN7024		

DATE	BY	CH
-	-	-
EN7024		

DATE	BY	CH
-	-	-
EN7024		

DATE	BY	CH
-	-	-
EN7024		

DATE	BY	CH
-	-	-
EN7024		

DATE	BY	CH
-	-	-
EN7024		

DATE	BY	CH
-	-	-
EN7024		

DATE	BY	CH
-	-	-
EN7024		

DATE	BY	CH
-	-	-
EN7024		

DATE	BY	CH
-	-	-
EN7024		

DATE	BY	CH
-	-	-
EN7024		

DATE	BY	CH
-	-	-
EN7024		

DATE	BY	CH
-	-	-
EN7024		

DATE	BY	CH
-	-	-
EN7024		

DATE	BY	CH
-	-	-
EN7024		

DATE	BY	CH
-	-	-
EN7024		

DATE	BY	CH
-	-	-
EN7024		

DATE	BY	CH
-	-	-
EN7024		

DATE	BY	CH
-	-	-
EN7024		

DATE	BY	CH
-	-	-
EN7024		

DATE	BY	CH
-	-	-
EN7024		

DATE	BY	CH
-	-	-
EN7024		

DATE	BY	CH
-	-	-
EN7024		

DATE	BY	CH
-	-	-
EN7024		

DATE	BY	CH
-	-	-
EN7024		

DATE	BY	CH
-	-	-
EN7024		

DATE	BY	CH
-	-	-
EN7024		

DATE	BY	CH
-	-	-
EN7024		

DATE	BY	CH
-	-	-
EN7024		

DATE	BY	CH
-	-	-
EN7024		

DATE	BY	CH
-	-	-
EN7024		

DATE	BY	CH
-	-	-
EN7024		

DATE	BY	CH
-	-	-
EN7024		

DATE	BY	CH
-	-	-
EN7024		

DATE	BY	CH
-	-	-
EN7024		

DATE	BY	CH
-	-	-
EN7024		

DATE	BY	CH
-	-	-
EN7024		

DATE	BY	CH
-	-	-
EN7024		

DATE	BY	CH
-	-	-
EN7024		

DATE	BY	CH
-	-	-
EN7024		

DATE	BY	CH
-	-	-
EN7024		

DATE	BY	CH
-	-	-
EN7024		

DATE	BY	CH
-	-	-
EN7024		

DATE	BY	CH
-	-	-
EN7024		

DATE	BY	CH
-	-	-
EN7024		

DATE	BY	CH
-	-	-
EN7024		

DATE	BY	CH
-	-	-
EN7024		

DATE	BY	CH
-	-	-
EN7024		

DATE	BY	CH
-	-	-
EN7024		

DATE	BY	CH
-	-	-
EN7024		

DATE	BY	CH
-	-	-
EN7024		

DATE	BY	CH
-	-	-
EN7024		

DATE	BY	CH
-	-	-
EN7024		

DATE	BY	CH
-	-	-
EN7024		

DATE	BY	CH
-	-	-
EN7024		

DATE	BY	CH
-	-	-
EN7024		

DATE	BY	CH
-	-	-
EN7024		

DATE	BY	CH
-	-	-
EN7024		

DATE	BY	CH
-	-	-
EN7024		

DATE	BY	CH
-	-	-
EN7024		

DATE	BY	CH
-	-	-
EN7024		

DATE	BY	CH
-	-	-
EN7024		

DATE	BY	CH
-	-	-
EN7024		

DATE	BY	CH
-	-	-
EN7024		

DATE	BY	CH
-	-	-
EN7024		

DATE	BY	CH
-	-	-
EN7024		

DATE	BY	CH
-	-	-
EN7024		

DATE	BY	CH
-	-	-
EN7024		

DATE	BY	CH
-	-	-
EN7024		

DATE	BY	CH
-	-	-
EN7024		

DATE	BY	CH
-	-	-
EN7024		

DATE	BY	CH
-	-	-
EN7024		

DATE	BY	CH
-	-	-
EN7024		

DATE	BY	CH
-	-	-
EN7024		

DATE	BY	CH
-	-	-
EN7024		

DATE	BY	CH
-	-	-
EN7024		

DATE	BY	CH
-	-	-
EN7024		

DATE	BY	CH
-	-	-
EN7024		

DATE	BY	CH
-	-	-
EN7024		

DATE	BY	CH
-	-	-
EN7024		

DATE	BY	CH
-	-	-
EN7024		

DATE	BY	CH
-	-	-
EN7024		

DATE	BY	CH
-	-	-
EN7024		

DATE	BY	CH
-	-	-
EN7024		

Pierce Heavy-Duty Rescue
Quote date 1/11/2024

43-48 month lead time

(1) One Pierce Enforcer Heavy-Duty Rescue DHE365

	Rates	All discounts	Some discounts	No discounts
Base vehicle		\$ 1,058,952	\$ 1,058,952	\$ 1,058,952
Published Options		\$ 209,823	\$ 209,823	\$ 209,823
Unpublished Options		\$ 61,611	\$ 61,611	\$ 61,611
Vehicle subtotal		\$ 1,330,386	\$ 1,330,386	\$ 1,330,386
Delivery		\$ 5,500	\$ 5,500	\$ 5,500
Performance Bond		\$ 4,094	\$ 4,094	\$ 4,094
Inspection Trips		\$ 28,800	\$ 28,800	\$ 28,800
Optional costs		\$ 38,394	\$ 38,394	\$ 38,394
Preferred Customer	-2.6%	\$ (35,139)	\$ (35,139)	\$ (35,139)
Chassis progress	-1.3%	\$ (17,779)	\$ (17,779)	
Factory completion	-1.0%	\$ (13,267)	\$ (13,267)	
100% pre-payment	-9.6%	\$ (127,433)		
Payment discounts	-11.9%	\$ (158,479)	\$ (31,046)	\$ -
HGAC Fee		\$ 2,000	\$ 2,000	\$ 2,000
Motor Vehicle Tax	10.8%	\$ 127,133	\$ 140,896	\$ 144,249
Total		\$ 1,304,295	\$ 1,445,491	\$ 1,479,890
Price deltas		\$ (141,196)		\$ 34,399
Apparatus Reserve 2025			\$ 1,000,000	
Sound Transit			\$ 250,000	
Additional SCF Funding			\$ 195,491	

Delta to recommended action